



Accelerate

Social Impact Report 2022/23

# Using our **voice**



# Chair's welcome

Accelerate operates in a national healthcare system that is in a state of flux and under severe pressure, like never before.

Moves to co-ordinate health and social care funding to increase efficiency of care, through the creation of Integrated Care Systems are underway, but are far from being fully formed.

Whilst these system changes and their intent are welcomed by all at Accelerate, the instability these changes create restricts long-term planning, both by the system itself and for providers such as Accelerate who partner with the NHS. The result? A lack of clarity on future direction and the leadership required to improve the provision of care.

## Our vision and our voice

In this environment, it becomes paramount that Accelerate's voice is heard. A voice that is proud of what we have achieved and is passionate about what more can be done. A voice that advocates for the advancement of lymphoedema and wound care through R&D, education and advanced practice for the betterment of patients we serve, directly or indirectly across the country and beyond.

Our vision is to boldly transform chronic wound, lymphoedema and mobility outcomes and to engage our patients at every step of their personal journey. A vision we seek to deliver as a responsible membership-based social enterprise, who operate in an inclusive, transparent manner. An organisation

that values the communities we serve and diversity in our own team. Whilst we operate in a challenging environment, we see opportunity as well. Accelerate is well positioned to advise and support our healthcare system in championing and advancing lymphoedema and wound care for those in need. This is what compels us every single day.



**Thank you for hearing, listening, taking me seriously and working in partnership with the other professionals involved in my care. For daring to be different. Challenging in an holistic way while setting goals for my recovery to my new normal. Mindset is everything.**

**Accelerate patient feedback**  
August 2022



**Peter Lock**  
Chair  
Accelerate CIC



# CEO Foreword

Accelerate is on a mission to improve the lives of people with lymphoedema or wounds. For us to achieve this, we need to bring challenge to ourselves and our sector. Good ideas need action and this is no easy task in a busy world of competing priorities.

Working as a social enterprise in health we have to find ways of making ourselves heard for the benefit of our community. This report evidences the breadth of Accelerate's work and our growing national reach and influence. Collaboration with others is key – we cannot deliver this change alone.

As well as celebrating our achievements and learnings in 2022-23, this report also looks to our future challenges. Knowing how each of our four business pillars – health, research, dressing optimisation and the Academy – delivers its impact is critical to our mission.

## Join us in the clamour for change

The area of health we work in and the people we serve are marginalised. Lymphoedema and leg ulceration are rarely identified within Integrated Commissioning Boards' work priorities despite the severe impact on lives.

In addition to terrible inequalities of access and outcome, there seems a poverty of expectation by decision makers that this could and must change. Avoidable harm is expensive for us all, yet our voices are not loud enough to create the change we need.

Accelerate is part of the national and international clamour for change. If our challenge is your challenge, then collaborate with us and raise your voice!



**Alison Hopkins**  
MBE, RN, MSc  
CEO  
Accelerate CIC



## As a membership organisation we're using our voice to:

- + Shape Accelerate's plans and developments
- + Enable the voices of the marginalised to be heard
- + Challenge the way we speak about and manage this overlooked community
- + Strengthen collaborations and connections to bring strategic leadership to this sector
- + Grow a community of practice that delivers creative wound and lymphoedema care
- + Bring evidence-based and innovative practice to the fore
- + Create knowledgeable leaders of the future
- + Demonstrate where savings can be made that will fund the transformation we need.



# Our voice and our value

How we operate and some of our achievements between April 2022 and March 2023.

## Membership Matters

Membership means employee ownership. Accelerate is a community that values working together for a social purpose. Our voice makes a difference and improves services and lives for patients, colleagues and the organisation.

Our Membership Council represents the voices of the Accelerate CIC members as they work closely with the Board. Partnership working ensures the views of all members are at the heart of delivery. How we do this:

- + We reviewed our Articles and strengthened the Membership Voice
- + We have both the Chair, Diane Hayes, and Vice Chair, Rhodri Harris, of our Membership Council on the Accelerate Board to bring their voice, ideas and challenge
- + Our Membership Council is part of consultation on Board and Executive matters
- + We're central to the Annual General Meeting
- + We shape our strategy and how we are to deliver it



“Membership is an opportunity to support the growth of each other, ourselves and our team, and gives us a sense of belonging”

**Jeniffer**  
Accelerate Member

### Our community reinvestment

- + £6,943 in free Academy course places
- + Rosetta Life programme
- + Mentoring for external programmes
- + 47 visitors, students and placements
- + Patient Partner programme
- + Diagnostic equipment
- + Master's module for the team

# £59,693

Total community reinvestment value.



## Ventures that inspire

**Beyond Bandages:** a bespoke and collaborative educational programme for East Coast CIC transformed leg ulcer management, improving clinicians' confidence and competence in this vital therapy [\[Learn more\]](#).

**The Accelerate Dressing Optimisation Scheme** delivers significant ongoing reduction in spend per resident [\[Learn more\]](#).

**Gait and biomechanical expertise** are part of our multi-disciplinary approach.

# 200+

People on our Patient Initiated Follow Up Programme (PIFU) [\[see page 12\]](#)



## Prioritising data security

Keeping Accelerate's patient data safe is critical for us. We do this by ensuring we have tight security on our network, our devices are secure, staff use two or multi-factor authentication and understand the importance of keeping patient data safe.

We see our IT and computer systems as if it were a body. We check for weaknesses in the system or a potential source of infiltration, we patch these over to prevent computer viruses from entering and causing serious harm. It is as simple as that!

**Sarah Smith**  
Digital Solutions and Compliance Manager



Our standards for patient data security have been met by:

- + Passing our Cyber Essential Plus
- + Completing our data security protection toolkit
- + Full training on keeping data safe and secure
- + Full penetration testing



## Outstanding achievements in 22/23



- + Greater amplification of our voice through exciting collaborations in the UK and internationally [\[Learn more\]](#)
- + 100% of patients thought it worthwhile to be involved in our research programmes [\[Learn more\]](#)
- + 99% of learners rated our Academy courses as good or excellent [\[Learn more\]](#)
- + 98% of dressings ordered on our Dressing Optimisation platform Click, arrived within 48 hours [\[Learn more\]](#)
- + 95% of venous leg ulcers healed in 24 weeks [\[Learn more\]](#)
- + 88% of gait patients reported high satisfaction levels [\[Learn more\]](#)
- + 81% of patients with lymphoedema were put on a maintenance programme [\[Learn more\]](#)
- + 96% of appointments post assessment showed no infection [\[Learn more\]](#)
- + 0 formal complaints [\[Learn more\]](#)

“A big thank you for hearing, listening, taking me seriously and working in partnership with the other professionals involved in my care. For daring to be different. Challenging in a holistic way while setting goals for my recovery to my new normal. Mindset is everything.”

**Accelerate Patient**

# What we stand for

We deliver on our vision and mission through our four pillars.

## Vision

Our vision is for a world where access to effective, responsive and personalised local care for those with lymphoedema or wounds are a reality.

## Mission

Our mission is to show that the Accelerate Way will benefit patients through bringing clinical expertise, empowerment, education and innovation.

**Health**  
We are providing advanced bespoke and extended scope clinical services for the treatment of wounds and lymphoedema to enable truly personalised, multidisciplinary care.

**Academy**  
We are building confidence and competence in effective wound and lymphoedema management through independent, high quality, accessible education.



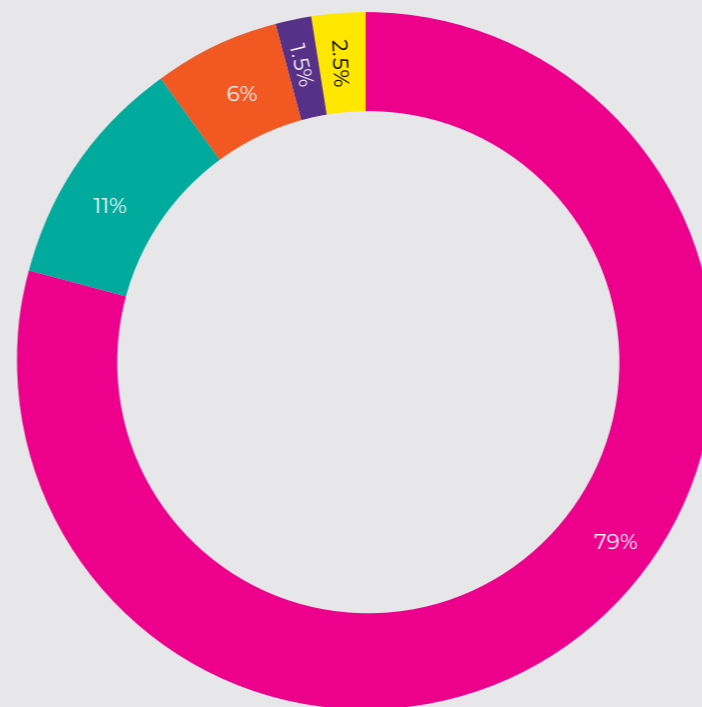
**Dressings Optimisation Scheme (DOS)**  
We are enabling savings through Click our online system for ordering and optimising dressings across a health system. Clinical expertise is used to analyse dressing spend with the aim of identifying savings to reinvest in wound services locally.

**Research**  
We are leading and participating in research trials within clinical practice. These are pivotal to improving lives of our patients by finding new and effective treatments that can enhance well-being and quality of life.

# Financials

Funding is split between our pillars

## Income



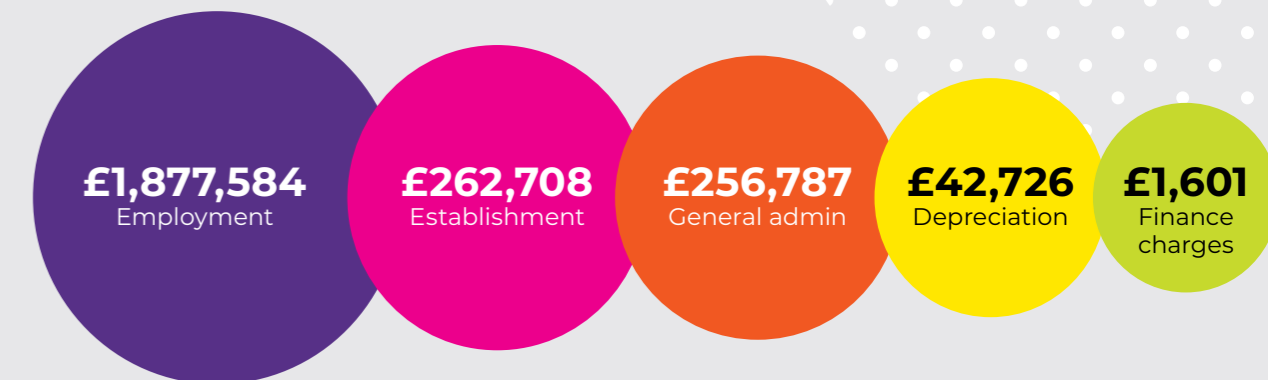
- Health £2,033,367
- DOS & GME £276,229
- Academy £156,128
- R&D £42,393
- Other £57,463

The information contained in this report reflects our finances by core activities or our pillars. For statutory reporting purposes, our annual financial statements are presented differently, in accordance with financial reporting standards

# £3,674,015

Turnover 2022/23

## Expenditure



## Community reinvestment

**£26,786**

Rosetta Life & Patient Group

**£6,943**

Free Accelerate Academy places

**£3,940**

Mentoring and placements

**£20,824**

Diagnostic equipment

**£1,200**

Masters module for Accelerate team

# £59,693

Total community reinvestment



# Pillar 1 Accelerate Health

Accelerate Health delivers excellent multidisciplinary care to people with lymphoedema and wounds, especially complex leg ulceration. We bring collaboration and creativity to deliver expert personalised care creating improved outcomes for patients.

One of our unique attributes is having podiatry and biomechanics at the heart of lymphoedema and wound care, and this patient quote shows how much it is valued.

**“I was assessed by your podiatry and lymphoedema specialist, Fran Campbell, who explained the effects of my skeletal and muscular issues, providing advice on changes I can make. Fran prescribed insoles which corrected my posture, making walking comfortable. The swelling in my leg has reduced. Thank you for your excellent service.”**

### Learning from patients

Most of our patients are referred from across North East London and we advocate for improved pathways through our collaboration with our NHS partners. Our concern remains inequitable access, especially for people with



**Caitriona O’Neill**  
Director of  
Clinical Services  
& Clinical Lead for  
Lymphoedema



lymphoedema. The nearly 10,000 patient appointments conducted in 2022-2023 provided so much learning, allowing us to bring a significant voice to influence national and international conversations. Next year, we expect to be managing 15% growth in referrals for lymphoedema management alone.

The data we capture on leg ulcer healing and the reduction of cellulitis post treatment demonstrates the impact of consistent evidence-based care. Accelerate is expert in advanced and complex compression therapy, which is taught in the Academy. The impact of our responsive service is borne out in our patients’ confidence to self-manage. This is powerful for our patients, avoids the costly harm of delays and sub-optimal care and reduces workload for nursing staff and hospital admissions for infection.

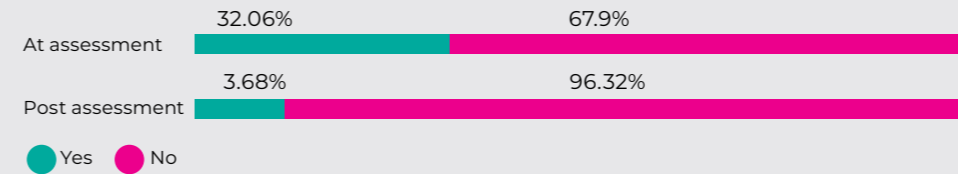
### Accelerate’s rigorous approach

Our clinical teams are committed to delivering excellence. Our systems of governance provide assurance for the Board, commissioners and the Care Quality Commission. We received no formal complaints in 2022/23. We invest in our team through formal education, internal mentorship and encouraging our team to stretch and grow in their field. This is key to ensuring we have the right skills now and in the future.

The Patient Group is one way of hearing patients’ voices. They sit on interview panels for senior appointments, displaying our ambition for transparency. Our arts in health programme ([see page 11](#)) was another valuable opportunity to learn from our patient community.

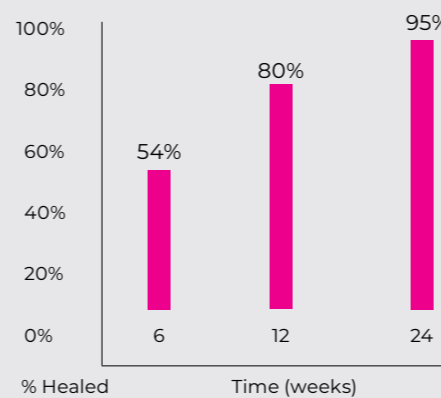
### Cellulitis treatment reduces cellulitis

At assessment 32% of patients have a history of one or more episodes of cellulitis. After treatment, this reduces dramatically to 3.68% of appointments reporting cellulitis. This graph demonstrates the impact of specialist treatment and the positive impact on lives and the health economy.



### Accelerate venous leg ulcer healing rates\*

\*The national data states 47% healed at 12 months



## Our impact in numbers

We deliver infection reduction and reduced admission for North East London residents.

# 81%

of people with lymphoedema go directly into a maintenance programme at assessment

We assessed 1,260 patients during the year.

+ 32% of patients arrived having had at least one episode of infection or cellulitis

+ 8% of patients had a history of admission to hospital for infection or cellulitis

We had 7,693 interactions post assessment with patients, an average of 6 appointments per patient. At these appointments only 3.7% recorded an episode of infection or cellulitis and only 0.5% recorded an admission to hospital.

**Accelerate Intelligence Management System (AIMS)**

AIMS is our bespoke appointment and patient record system. Standard NHS record systems cannot provide the depth of data we require about our community's needs so we invested in a complete system that can demonstrate the benefits we bring, support our customer service and quality improvements and feed into clinical audits. We use this system to inform wound and lymphoedema care system transformation.

**Biomechanics and gait**

Gathering new data is crucial for delivering a patient-centred service. For example, we have found that in complex clinics, 1 in 13 new referrals required Biomechanic and Gait assessment; outcomes can include the provision of new shoes, orthotics, referral to Physiotherapy or Falls Teams. For those patients who received orthotics, high satisfaction rates were reported (88%) for orthotics provided and the service given.

**Real lives transformed**

Promoting physical activity for individuals with long-term lower limb conditions needs innovative strategies, in contrast to short-term conditions that require brief rehabilitation. Our research demonstrates the positive impact of music and drumming (cardio-drumming) to increase physical activity. We ran a lympho-venous drumming pilot programme for lymphoedema patients, built upon these principles, featuring self-management education. Participants found the drumming engaging, and the educational component valuable. Results included patients with improved walking speeds and balance.



**Savings delivered**

In one borough, we identified four complex patients who had non-healing leg ulcers and lymphoedema. We worked with local clinicians to deliver compression therapy. The impact of expertise and improved local confidence healed leg ulcers and saw a saving of £297k.

**£297,000**

of savings in just one borough\*

**9,891**  
appointments

**3,784**  
patient caseload

**1,371**  
new patients

\*Data on file



# Spotlight on Wishing Well – a patient empowerment programme

In 2022, Accelerate worked with Rosetta Life – an arts in health company – to deliver a 12-week programme for patients living with lymphoedema

One of the effects of the pandemic in 2020-21 – still being felt today – was social isolation. For people living with lymphoedema, this feeling was exacerbated, and the team at Accelerate wanted to create a programme that improved social connections and well-being.

**“Ten of our patients living with lymphoedema took part. All had a history of complex health issues,” says Caitriona O’Neill, Director of Clinical Services and Lymphoedema at Accelerate. “During the programme, we saw their mobility improve as well as their confidence. They became a sort of family – who continue to support each other now, a year on.”**

**“The programme got me out of the house, meeting people,” says Valerie, one of the participants. “It’s made a big difference to my life.”**

The Wishing Well programme focused on delivering new skills through peer support as participants performed, danced, recited poetry and told their stories.

**“This was a platform for a strong and empowered patient group – which we understand sits at the heart of clinical delivery,” Caitriona explains. “Engaging with their bodies in this new way and sharing their stories, meant participants felt empowered to manage their own health.”**

## New and exciting opportunities

As a result of the programme, the participants gained new experiences and are currently working on the peer welcome at Accelerate.

+ Live performance at Rich Mix Cinema, April 2022

+ Virtual attendance at the London Health Creation Spring Festival, May 2022

+ Members participated in Accelerate Executive interviews and in Bike Works trial

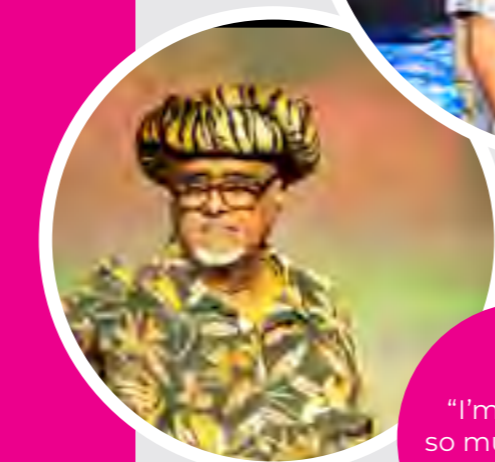
+ Speaking at three national conferences

+ Scope, definition and purpose for the patient group completed

“I’ve more energy thanks to control of my breath and light dance”

“I’m so glad I came on this journey”

“I’m moving so much better and for longer”



# Patient-centred systems that make all the difference

We drive forward system improvements in a patient-centred way in two schemes, Garments Made Easy (GME) and enhanced Patient Initiated Follow-up (PIFU)

### Garments Made Easy Scheme

GME has been live in City and Hackney since 2018. It was developed because the current prescribing system for compression garments is fraught with delays and confusion for clinicians and patients.

### Our solution:

- Reduces GP prescribing, saving time
- Reduces error: expert clinician chooses correct garment
- Orders placed directly at assessment
- Direct relationship with supplier reduces delay
- Service follow up ensures joined-up approach

### Our results:

- 98% of orders with wholesaler on the day of assessment
- Patients supported through the scheme preventing gaps in life-long maintenance

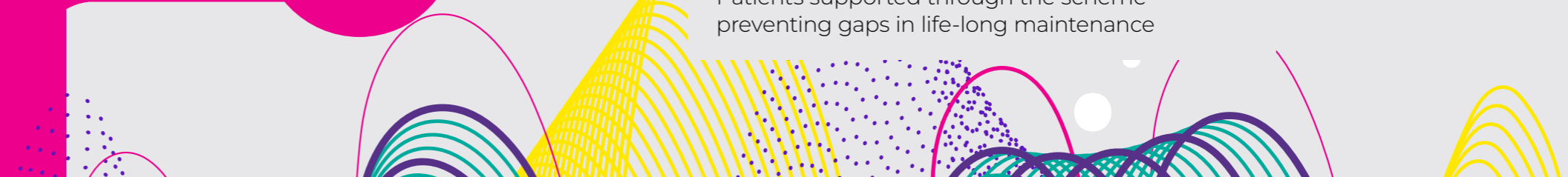
The service was enhanced to include a patient-initiated follow-up (PIFU) service, for stable patients confident at self-management. This non-medical screening system – now live for 200 patients – triggers back to a clinician if there is a concern so we catch changes early

### Why it’s important

Compression garments prevent fluid from building up. For patients with chronic leg or arm swelling, wearing the garment every day is an essential part of lifelong management. Delays in the provision of garments results in people needing compression bandaging management for longer, using additional and avoidable nursing time.

“This service provides the expertise and delivery of quality care and prescribing that this patient group sorely needs but so often does not get”

**Gary Marlowe**  
City and Hackney GP  
Clinical Lead



Pillar 2

# Accelerate Academy

Education matters to Accelerate and we're growing our influence nationally and internationally. We can't meet our mission of changing the lives of people with lymphoedema or complex wounds without growing our national leadership and improving the skills of clinicians. These clinicians need more than technical skills; they need to be the voice of their community, and their colleagues and to advocate for improved services.

**“** You gave me all the knowledge and skills I need as the Tissue Viability / Lymphoedema CNS  
**”**  
Accelerate Academy Learner

### Bespoke programmes

The Academy recognises the need to grow our community of practice, and we have responded through the delivery of bespoke education programmes across the country. Each programme was designed with the system leaders in Norfolk, Yorkshire, East Sussex and North Essex based on specific local population health needs-intelligence, to prepare clinicians for practice across various settings.

Bespoke courses are predominantly in-person education but many of our standard courses are successfully managed online, even our frequently fully-booked debridement course. Our Academy teaching team is skilled in delivering life changing, inspiring courses.

### Collaborations and shared vision

This year we launched a collaboration with the Welsh Wound Innovation Centre (WWIC) which was celebrated through a series of international free webinars to share this exciting news.

### Free learning activities

We know clinicians face challenges in accessing objective, innovative education, so as part of our commitment to bringing evidence-based practice to the fore, each year we offer a significant number of free places as part of our social investment.



**“** Georgina Ritchie  
Director of Education  
**”**

### Learning from our community

We look to this community for our steer on what we need to do to create impact. We want to ensure our materials represent the diversity of people we serve. Next year we'll audit photographs used in teaching to measure if we've hit our target of 50%+ featuring people with darker skin tones.

We recognise patients often have multiple health and social-care challenges beyond lower limb wounds and lymphoedema. Our ambition is to expand our curriculum – and our teaching capacity – to cover long-term conditions, non-medical prescribing, public health, leadership and clinical teaching practice.

We recognised the need to offer a learning experience that creates confident wound care leaders of the future, develops clinical knowledge and explores how clinicians can use their voice to create change through cohesion, leadership and public health in wound management.

**“** The best course I've completed in ages. It made me reflect on my practice and the importance of the micro-cellular process in clinical practice  
**”**  
Accelerate Academy Learner

## Working with Leeds Beckett University



This year we launched the 'Advanced practice in wound management' module at Leeds Beckett University. It's unique as it's run by a social enterprise but facilitates learners to undertake Master's-level study within a university. We recognised the need to offer a learning experience that creates confident wound care leaders of the future, develops clinical knowledge and explores how clinicians can use their voice to create change through cohesion, leadership and public health in wound management.

## East Coast Community project



Beyond Bandages is our lower limb champions' development pilot programme with East Coast Community Interest Company. It explored how developing clinical skills alone may not be enough to change leg ulcer practice and outcomes. It developed practical skills underpinned by evidence-based knowledge, and included coaching to enable clinicians to have the courage to use the right compression at the right time.



**99%**

of our learners rated our courses good / excellent

**£6,943**

donated in free courses

**522**

learners in 2022

**39**

courses delivered

**4**

bespoke education programmes facilitated

**Key impacts of Beyond Bandages**

- + Clinicians were more confident to give an accurate diagnosis after our programme (33% fairly or completely confident pre-programme, to 83% fairly or completely after)
- + Clinicians increased their confidence in knowing which compression to give to patients (67% fairly or completely confident pre-programme, to 100% after)
- + Clinicians felt empowered to speak up when treatment plans were suboptimal (80% completely or fairly confident to challenge senior colleagues before, to 100% after)
- + CQUIN attainment has moved from 2% (quarter 1) to 22% (quarter 2)
- + 50% reduction in time to assess from 143 days (Sep) to 78 days (Dec)
- + Presentation to The QNI Chief Nurse Executive Network meeting describing the impact this project had on confidence and competence in leg ulcer management

**Courses that engender confidence**

The data below from the Beyond Bandages programme shows what can be achieved through partnership working.

**20%**  
uplift in confidence to speak up when care is suboptimal

**33%**  
uplift in confidence to compress

**50%**  
uplift in confidence to diagnose

Pillar 3

# Accelerate Dressing Optimisation Scheme (DOS)

To set the context, the demand for wound services is growing with a **71% increase** in the annual prevalence of wounds and patient numbers going from **2.2 to 3.8million** between 2012-2017

(Guest et al 2017; 2020)

This growth is expected to intensify and continue to add pressure in the healthcare system. Dressing management is one aspect of this challenge and one where data driven efficiencies can fund a programme of transformation that focuses on delivering evidence-based care.

As recognised national leaders in the field of lower limb wound and lymphoedema care, Accelerate are committed to enabling better care for this group of patients. We recognised early on that financial pressures in the healthcare system may be a barrier to investment in services. Our solution is finding efficiencies through our innovative Dressing

Optimisation Scheme supported by our impartial dressing procurement system Click!™ and working with Medicines Management and the FP10 system.

### Reducing costs and increasing impact

The Dressings Optimisation Scheme has been commissioned and used in North East London since 2009. We've achieved significant savings in dressing spend in the boroughs commissioned, funding many projects and equipment over the years. Our experience tells us that embracing the scheme across primary and community care releases 20%\* of the dressings budget and supports Net Zero strategies through



“  
**Alpana Malde**  
Commercial Director

Using our voice,

reduction in waste and transportation. We are proud that City and Hackney and Tower Hamlets are consistently two of the lowest spending boroughs in the country with a dressing spend of around £1.69 per resident.\*

Our aim as national leaders is to widen the geographical reach of the Dressing Optimisation Scheme to enable release of funds for national investment and improvement in wound care services. We believe extending our geographical reach will contribute to achieving the NHS goal as set out in the Long-Term Plan of 2023 of reducing procurement and supply chain costs. It'll also support the Net Zero targets that the NHS has set itself.

“  
**The savings we've made on our dressings budget using DOS and Click!™ have been worthwhile. With money saved we bought topical negative pressure pumps to support wound healing. This has improved patient discharge from hospital which in the past was often delayed while TVNs borrowed or rented equipment**  
**Elaine Flaherty,**  
Tissue Viability Lead  
North East London  
NHS Foundation Trust

## Leading change through insights

Our leadership and collaboration helps providers to manage their dressing usage by:

- + Identifying where low use of compression therapy links to dressing usage and spend
- + Managing use of large dressings or antimicrobials
- + Ensuring formulary compliance across the borough with no industry allegiance
- + Identifying variance in practice across the community teams and sharing good practice
- + Using clinical insights to educate and develop quality improvement programmes

\*Data on file



**402**

Click delivery locations, an increase of 34% since 21/22

**99%**

scheme-related emails responded to within 1 working day

**98%**

deliveries received in 48 hours

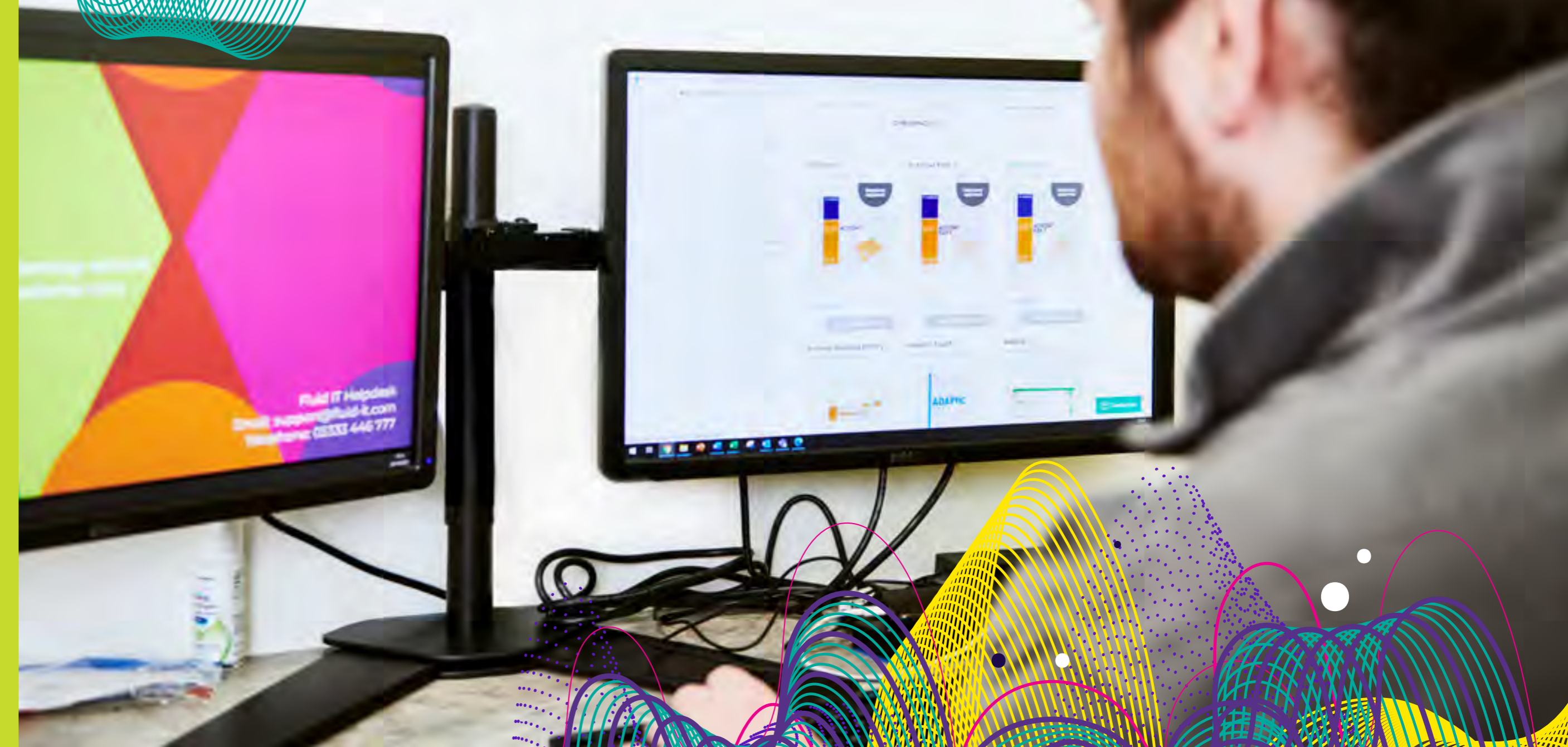
**93%**

formulary compliance\*

**18%**

reduction in spend per resident (over a 2 year period)\*

\*Data on file





Pillar 4

# Accelerate Research & Development

We lead and participate in research trials that are pivotal to improving the lives of our patients by finding new and effective treatments that can enhance well-being. Accelerate's leadership in research is based on access to appropriate patients alongside the team choosing programmes that will support positive outcomes enhancing the knowledge base.

**For patients**

Affording the opportunity to join research trials allows our patients the chance to take part in treatments that otherwise might not be available. It allows them greater involvement in decision making and the insights they voice influence evaluation outcomes.

**For our team**

Research can fill gaps in knowledge and change healthcare professionals' practice; research brings reward because we're adding to the body of evidence-based knowledge. Collecting data and being involved in publishing papers and presenting at national conferences creates professional development and development of our speciality.



**Karen Staines**  
Director of  
Research and  
Wound Care



**For the organisation**

Evidence shows that where there's a strong record of research in NHS organisations it has shown improved patient outcomes. The CQC includes research within the 'Well Led Framework' and has recognised research activity as a key component of patient care. It's a sign of a progressive organisation that is keen to develop in their field. Research increases our 'National Visibility' as we become known as a recognised centre, increasing our potential to generate income to support our success as a non-profit organisation.

**For industry partners**

Accelerate has a reputation of diligence and attention to detail. We encourage an enquiring mind, whereby working with Accelerate increases the chance of a successful outcome of the research. We choose studies based on our core mission of developing the specialisms of leg ulcer care, lymphoedema, gait and biomechanics, bringing significant commitment to the chosen programmes from specialists in this field. Research programmes and NDA are strictly adhered to allowing insight to innovative solutions that might otherwise not become available.

This coming year we will focus on how research and evaluation can support antimicrobial stewardship strategies and explore topical oxygen therapy as an adjunct to compression therapy to expedite healing for venous leg ulcers. We will also investigate the reliability of automated Ankle Brachial Pressure Index (ABPI) against manual ABPI with handheld Doppler.

## Working with Industry

Accelerate has worked with Firstkind Ltd since 2018 when they provided excellent support as we first embarked on the new journey of conducting a Randomised Controlled Trial (RCT). Since then, we've established a further three RCTs, enabling our patients to be involved in research. "We have been working with Accelerate for five years," says Dr K J Day, Head of Clinical Affairs at Firstkind. "As a partner in research, the centre is second to none. During our pivotal landmark trial, looking at how to improve wound healing rates for patients with venous leg ulcers, Accelerate recruited 43% of all patients randomised in the study, and during a global pandemic (see Bull et al, Adv. In Wound Care. In-press). They are a trusted resource that bring experience and professionalism to wound research."

Accelerate were the top recruiter for this European multi-centre RCT looking at the role of the GEKO device. Our 39 patients made up 43% of the patient population.



### New finding!

Using fluorescent therapy, we found that 3-4 minutes was the optimum time for wound bed cleansing, reducing infection and anti-microbial dressing use\*.

### Opening up access

For those with unusual leg ulcers such as sickle cell or pyoderma gangrenosum, they can access research programmes funded through our social investment.

### Patients' voices

In addition to publications, our patients' voices have been heard within research study focus groups. Accelerate supports applications to the National Institute for Health and Care Research (NIHR) in an advisory capacity and are currently included in three potential wound and lymphoedema treatment RCTs.

\* Data on file



# 100%

clinical trial patients said the experience was positive and worthwhile

# 50%

reported an improvement in pain, mobility and wound reduction

# 7

clinical trials across the year

# 4

RCTs running at any one time period



# Amplifying our voice

## Developing leaders and national influencers

We know that having a complete and competent workforce is a huge challenge for the NHS. Accelerate also faces this same challenge. In addition, nurses and therapists have reduced opportunities to develop specialisms thus we have to provide significant investment in time and money to grow our future specialists and leaders. Accelerate has acted to create a sustainable specialist workforce through the following:

- + Having an inclusive and supporting work environment
- + Ensuring all staff have time to care and to deliver excellence
- + Provision of specialist education and funding of external Master's modules
- + Personal development plans for all
- + New role of Advanced Nurse / Therapist Specialist advocating internal progression
- + Opportunities for flexible working and adjusted hours



Karen Staines awarded the title of Queen's Nurse

This personalised approach to development brings success!

- + Karen Staines was awarded the Queen's Nurse title
- + Hayley Turner-Dobbin was awarded the Gold Michelle Deeth New Talent Award, Journal of Wound Care (JWC) awards 2023
- + Peter Lock our Chair mentoring a senior nurse looking to gain experience and insights of the role of a non-executive board member
- + A retention rate of over four years' average service for a growing workforce
- + Four internal promotions
- + The development of dual roles, where nurses develop both wound and lymphoedema specialisms
- + All staff days led by our team



Thank you to Helen Glenister who brought excellent leadership as Chair 2017-2022.



Caitriona and Valerie winning at the JWC Awards for the Wishing Well project



Wishing Well participants & Accelerate team presenting at a conference



Team at NHS community provider event

## Accelerate Influencers

We know that raising our voice to take part in the national and international conversation is vital so we can share our knowledge as well as learn from others to drive the sector forward. Here's a snapshot of how we did that:

- + Codie Whenham presented a poster at the Society of Tissue Viability (SoTV) 2022 Conference, 'Enhancing patient experience the Accelerate Way'
- + Hayley Turner-Dobbin presented a poster at Wounds UK 2022 'Research - so much more than just statistics'
- + Caitriona O'Neill presented a poster at BLS 2022 'Wishing Well Project'
- + Presentations at 5 national conferences and the Sociedade de Feridas in Portugal
- + Alison Hopkins presentation to European Wound Management Association (EWMA) conference 2022 'The impacts of system improvement on leg ulcer healing rates in a London borough'
- + We have provided a significant contribution to the London Lymphoedema Community of Practice and their collation of a minimum lymphoedema data set
- + Contributing our expertise to the British Lymphology Society, Lipoedema UK, Legs Matter and the Society of Tissue Viability



Codie's poster at SoTV 2022



# Making a noise together

Sharing our views and collaborating with partners is raising the profile of our sector and showcasing all the great work going on to improve our collective knowledge and the impact on patient outcomes.

## Publications to be proud of

Accelerate wants to influence the system and improve the critique and provide solutions. Publication of an inquiry or the results can be arduous. It is an area we encourage our clinicians to pursue. New findings are key to our growing understanding of the impact of wounds and lymphoedema on the population we serve.

- + Journal of Wound Care 2022 'Comparison of compression therapy use, lower limb wound prevalence and nursing activity in England: a multi-site audit' Hopkins and Samuwiro
- + Journal of Wound Care 2023 'Tackling hard-to-heal wounds with a new option for chemical debridement'
- + Journal of Wound Care 2023 'The impact of a new intervention for venous leg ulcers: within-patient controlled trial' Bull et al

## Our collaborations

Collaboration to deliver our mission is crucial. We know we cannot transform lives on our own. We need multiple voices and multiple views on this world and transformative thinking to bring the change. Collaborations take time and hard graft. We think it is worth the effort.

We collaborate with:

- + Our patients as partners and ambassadors
- + National and international Societies or Forums
- + NHS providers and commissioners locally and across the UK
- + Industry
- + Universities and training hubs
- + Primary Care and GPN Training Hubs

Alpana Malde joined the Accelerate team as Commercial Director



We said goodbye to Dr Richard Bull, part of the team who retired after 28 years



We said goodbye to Anna Swinburn who has moved on to pastures new



Accelerate membership articles vote



## We believe Legs Matter

The Legs Matter coalition, a committee of the Society of Tissue Viability, is a group of eight national organisations that work together to increase awareness, understanding and action to prevent harm for lower leg and foot conditions. Being part of Legs Matter means that we do not need to reinvent the wheel.

The resources for our patients are developed out of the coalition members' expertise, thus we get the best resources for our community. This year we led a joint Legs Matter webinar with the European Wound Management Association with a focus on their Compression Therapy campaign. The work of the coalition brings an annual focus on raising our voice with the community we serve and being part of a national push for change.



Accelerate bring a multidisciplinary perspective to Legs Matter with patient centredness being at the forefront of their contribution to campaign strategy. In addition, having their experience of commissioning and their involvement in national debate has helped us build a coalition that is trusted and well respected

**Sarah Gardner**  
Director, WoundMatters  
Former Chair of Legs Matter



Alison as the Vice Chair of the Legs Matter coalition





Accelerate has an excellent reputation, both for its innovation and for its collaborative approach with key organisations across the health sector. Accelerate brings real value, influence and leadership to the national conversation around community nursing and excellence in wound care. I believe Alison's vision and leadership, including as a Fellow of the QNI, has contributed greatly towards the success of Accelerate as a CIC.

Dr Crystal Oldman CBE – Chief Executive  
The Queen's Nursing Institute



Diane Jones, Chief Nurse NEL ICB, visits Alison and the Accelerate Team



Saying goodbye to Angela, who was starting her nurse training



Diane at the AGM speaking about membership voice shaping the strategy



Georgina Ritchie honing her clinical skills

# Hello. How are you today?



I have been discharged from your service today. I would just like to say how fantastic your services is. I have been treated with kindness and compassion. My feet and legs have been thoroughly looked after. I could not have dreamed this day would ever come

Accelerate Patient





Accelerate

Accelerate CIC  
Centenary Wing  
St Joseph's Hospice  
Mare St, Hackney  
London  
E8 4SA  
United Kingdom

T 020 3819 6022  
E [hello@acceleratecic.com](mailto:hello@acceleratecic.com)  
[acceleratecic.com](http://acceleratecic.com)  
[X \(Twitter\)](#)  
[Facebook](#)  
[LinkedIn](#)

## Get in touch

As this report demonstrates, we cannot drive the changes that are needed in wound and lymphoedema care alone.

If you've been inspired by anything you have read here, want to commission a bespoke education programme, learn more about dressing optimisation or how we are gathering data to improve patient outcomes, please get in touch with us. We'd love you to raise your voice alongside ours.

### The Accelerate Team

